

Home Features

Our foundational product is an all-electric high performance single family home. At the same time, based on our localized conditions, we are also developing two flat rental owner/rental and a more accessible bungalow home.

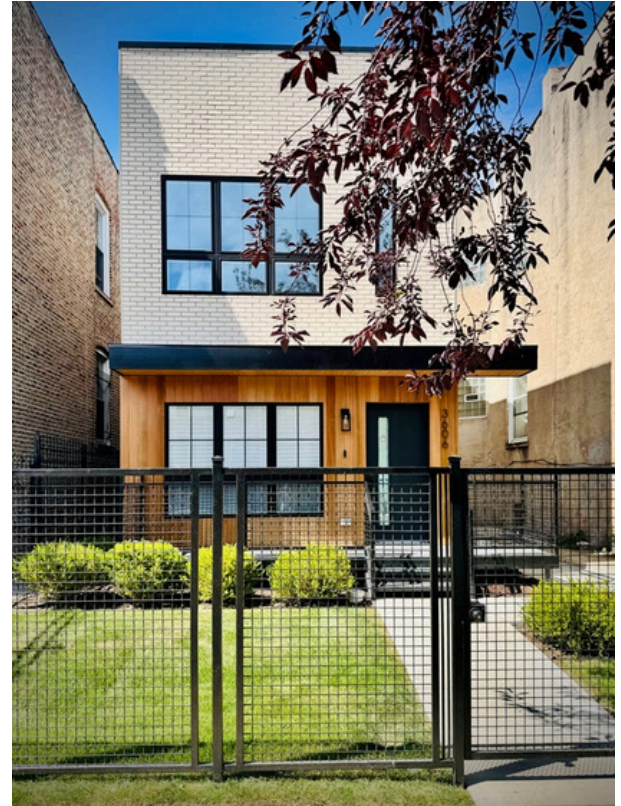
Each house is:

- 1,445 SQFT
- 2 Floors
- 3 Bedrooms
- 2 Bathrooms
- 2 Living spaces
- 2 parking spaces and fenced yard

Each home consists of two modules stacked one on top of the other. These two units sit on a concrete foundation. The facade of each home can be customized based on a particular owner's specific taste.

Each Inherent Home comes equipped with a range of smart appliances and apps that support ease of operating your home. Upon purchase, an Inherent Guide will help with initial set-up:

- Nest Thermostat
- ADT Alarm System
- Nest Smart Doorbell
- Nest Wifi Router
- Nest Wifi Speakers
- Yale X Nest Smart Door Locks
- Nest External Security Cameras
- Nest Smart Home Hub
- Energy Monitoring
- Water Monitoring
- Air Quality Monitoring
- UV Air Filter
- Smart Light Switches



[Click here](#) for tour of home

[Click here](#) to learn more about Inherent LC3

For more information, contact **Sonia Del Real**, VP Sales & Economic Development at 773.934.5807 (sonia@inherenthomes.com)



Home Features

Our single family product has an impeccable craftsmanship designed for families to comfortably expand into. Homes have open concept living over 3 spacious levels, including partially finished basement.

Each house features:

- 1,718 SQFT
- 2 Floors
- 3 Bedrooms
- 2.5 Bathrooms
- 2 Living spaces
- 2 parking spaces

Each home consists of beautiful landscaping surrounding the elegant brick facade. Bathed in natural light, the large windows throughout, illuminate the neutral interiors & highlighting the attention to detail that defines each homes.

The main level features open concept living, dining & kitchen for an inviting ambiance, perfect for entertaining guests or enjoying time with family. Second floor houses the laundry space, large master suite, two additional bedrooms, and additional full bath.

- Everlife luxury vinyl wood plank flooring (main level)
- Wall to wall carpeting (2nd level)
- Large kitchen island
- White shaker cabinets and white quartz countertops
- Energy efficient stainless steel appliances (gas range, refrigerator, microwave hood & dishwasher)
- Large master suite with walk-in closet & ensuite bath
- Energy Star windows
- Pre-plumbed basement and ejector pump installed
- Fenced yard and decks



[Click here](#) for tour of home

[Click here](#) to learn more about CBBC



For more information, contact **Maha Joudeh** 708.441.9769 (mjoude4@gmail.com)



Home Features

The KMW Bedrock home is a new modern single-family house for next-gen living. This home is designed to meet the highest standards in energy code for maximum energy efficiency. Modern materials and a clean design aesthetic are built for high durability and less maintenance.

Our Bedrock house is equipped with all electric appliances and a high-efficiency heat pump for low cost of operation.

Each home is:

- 1,645 SQFT
- 2 Floors
- 3 Bedrooms
- 2.5 Bathrooms
- 2 Car Garage
- Fenced yard



[Click here](#) for tour of home

[Click here](#) to learn more about KMW Communities



For more information, contact **Bill Williams** 773.969.6509 (bill.will@kmwcommunities.com)



Home Features

We are the redevelopment arm of NHS Chicago, www.nhschicago.org. Our rehab and new construction properties are built to be long lasting, easy to maintain and affordable. NHSRC builds 1-2 Unit "Flex" homes.

Each Flex Home is:

- 1500 to 2100 SQFT
- 3 Bedrooms
- 1.5 Bathrooms
- Fully finished basement
- Off street parking with access from alley

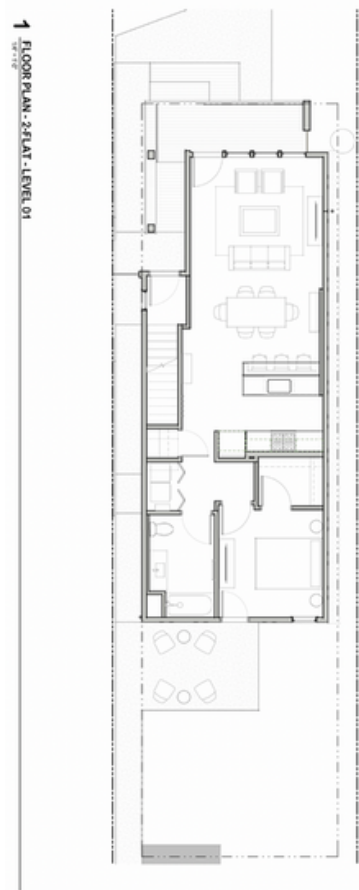
Flexible because of the opportunity for owner-occupants to generate additional wealth through rental income or live multigenerational under one roof

All electric homes reduce your operating expenses and utility costs and our homes are built with durable and easy maintain materials that are long lasting.

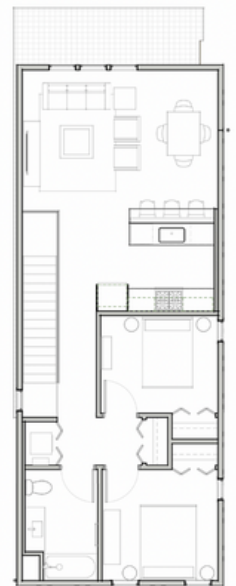
- The design can also be expanded to include a fully accessible accessory dwelling unit that can be utilized as a rental, live/workspace or multigenerational living
- All units will be insulated in accordance with recommended energy standards and contain energy efficient furnaces hot water heaters, appliances, and fixtures



1 FLOOR PLAN - 2-FLAT - LEVEL 01



2 FLOOR PLAN - 2-FLAT - LEVEL 02



[Click here](#) to learn more about NHSRC



For more information, contact **Shavon Hale** 773.329.4047 (shale@nhschicago.org)



Home Features

Our single family homes have open layout and finished basement. The facade of each home features front brick with hardy siding around with 4 ft brick wrap around.

Each house is:

- 2,900 SQFT
- 2 Floors
- 4 Bedrooms
- 3.5 Bathrooms
- 2 Living spaces
- 2 parking spaces and back deck

Each home consists of two modules stacked one on top of the other. These two units sit on a concrete foundation. The facade of each home can be customized based on a particular owner's specific taste.

Each home comes with neutral decor and the following features:

- Laminate flooring in living and dining area and all the bedrooms
- Porcelain tiled floors in the kitchen and baths
- 42" kitchen cabinets
- Quartz counter tops
- Stainless steel appliances
- Oak stairs with wrought iron spindles
- Wrought iron front fence along with quality wood fence



[Click here](#) for tour of home



For more information, contact **Neelam Dwivedi** 708.655.4621

Home Features

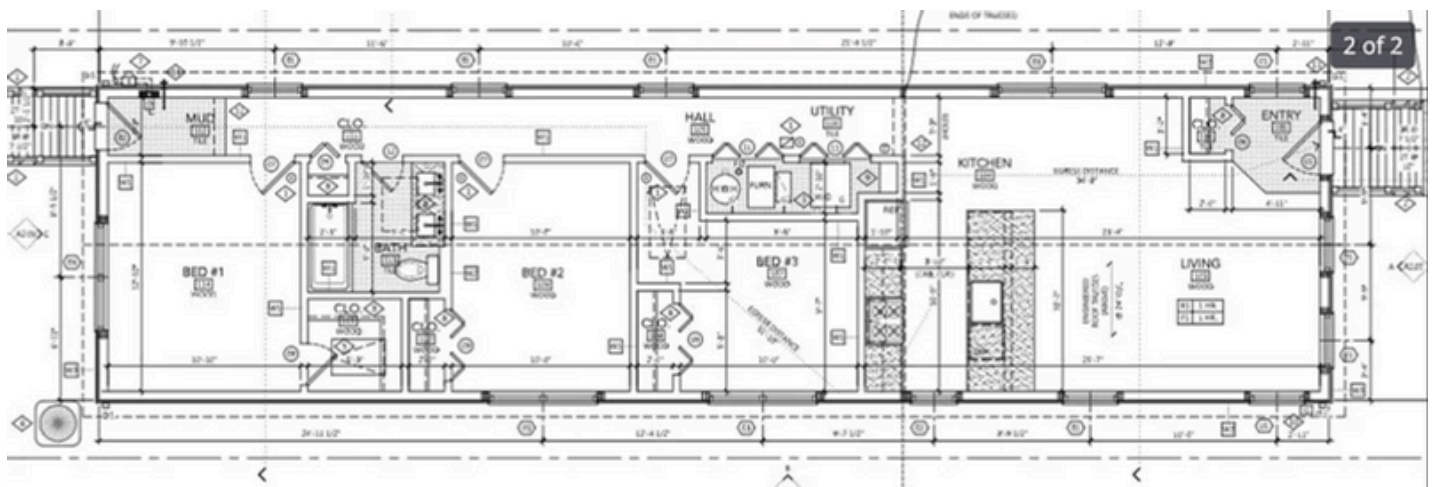
Our single family homes have a number of windows, allowing for a lot of natural light. There are vaulted ceilings in the living room, dining room, and kitchen. They feature quality contemporary finishes. The exterior of the home will have a mix of both Hardie and stone siding, giving a traditional and contemporary look.

Each house is:

- 1,200 SQFT
- 3 Bedrooms
- 1 Bathrooms
- 2 Living spaces
- 2 parking spaces at the rear with enclosed fence



Each home has a kitchen island with a granite top with an overhang to accommodate seating. The flooring throughout will be luxury vinyl tile, with ceramic tile on the tub walls up to the ceiling.



[Click here](#) to learn more about The Searles Group.



For more information, contact **Stephane Searles** 917.781.3499 (stephs@gmpdev.com)